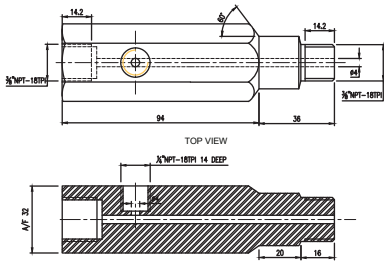
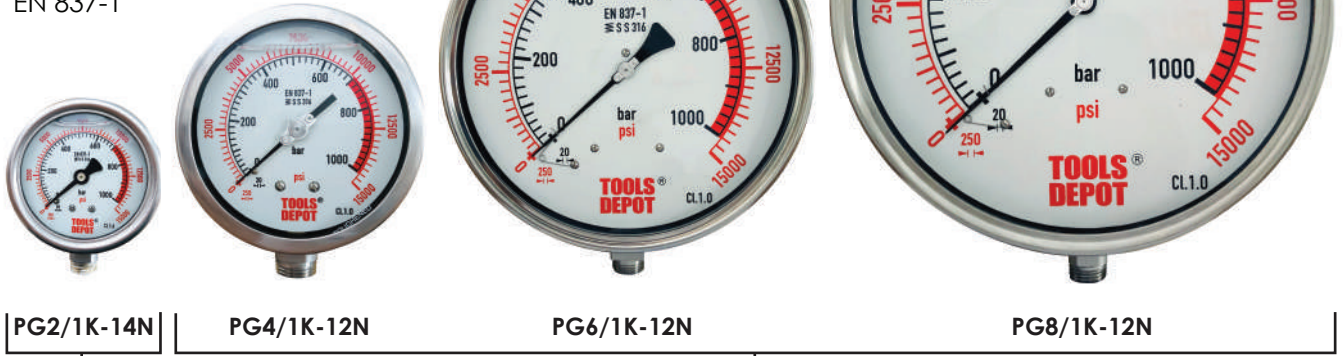


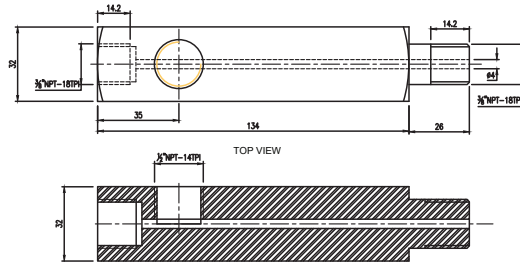
HYDRAULIC GAUGES

FEATURES

- Maximum working pressure : 1000bar/14500psi
- Stainless steel case & measuring system
- Rugged construction
- Liquid filled
- Standard followed in general EN 837-1



MODEL : GA14NPT



MODEL : GA12NPT

SPECIFICATIONS

- Dial size : 63mm / 100mm / 150mm / 200mm
- Mounting : Bottom connection direct mounting
- Connection : 1/4" NPT (for Dial size 63mm) / 1/2" NPT (for Dial size 100mm, 150mm & 200mm)
- Accuracy : ±1% of Fsd
- Temperature limit : 200° C (for Dial size 63mm) / 270° C (for Dial size 100mm, 150mm & 200mm)
- Operating range : 75% of scale value
- Bourdon : S.S 316
- Movement : S.S 304
- Socket : S.S 304
- Class & bezel : S.S 304, Crimping type (for Dial size 63mm) / S.S 304, Bayonet Bezel type (for Dial size 100mm, 150mm & 200mm)
- Dial : White Aluminium with black marking
- Pointer : Plain type (for Dial size 63mm) / Micro zero adjustment pointer (for Dial size 100mm & 150mm) / Center zero adjustment pointer (for Dial size 200mm)

MODEL	DS	A	B	C	D	E	Weight (grams)
PG2/1K-14N	63	12	32	Ø70	Ø63	14	240
PG4/1K-12N	100	12.5	48	Ø111	Ø100	22	935
PG6/1K-12N	150	15	49	Ø161	Ø149	22	1755
PG8/1K-12N	200	18	49	Ø216	Ø200	22	2480

